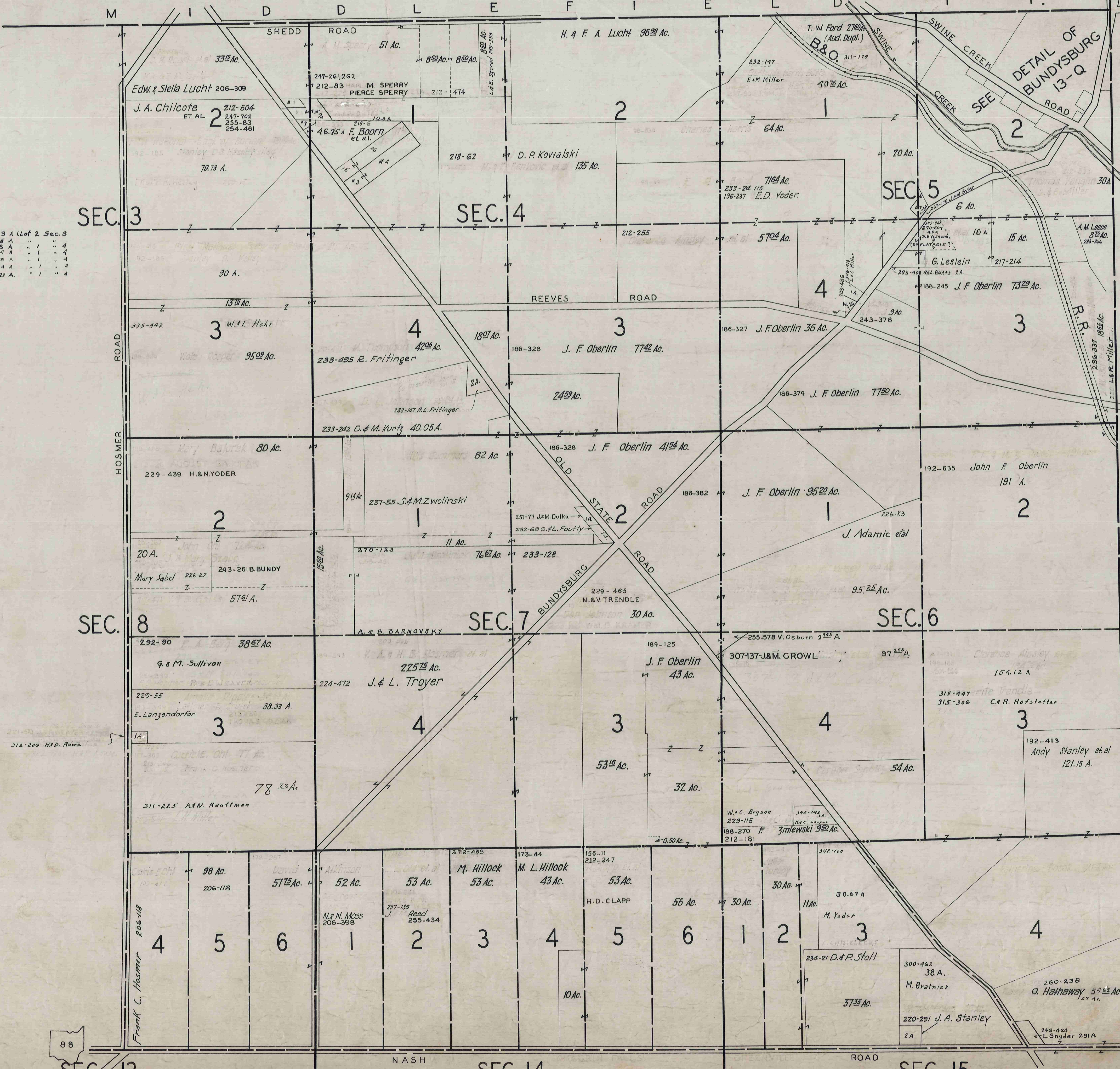


NORTH-EAST QUARTER

PARKMAN TWP.

NORTH-EAST QUARTER

No.				
1	B. STERLING	247-306	.69 A (Lot 2 Sec. 3)	
2	A.M. Baird	326-534	1.78 A	" " 4
3	A.M. Dulka	232-627	1.38 A	" " 4
4	"	232-610	5.14 A	" " 4
5	R.D. Schwenkeman	232-620	1.38 A	" " 4
6	"	232-624	5.14 A	" " 4
7	H. Ishea	312-234	.43 A	" " 4



SCALE 1 IN. = 10 CH.

JAN. 1, 1944
FEB. 1, 1944
JAN. 1, 1959

88
SEC. 13

SEC. 14

SEC. 15

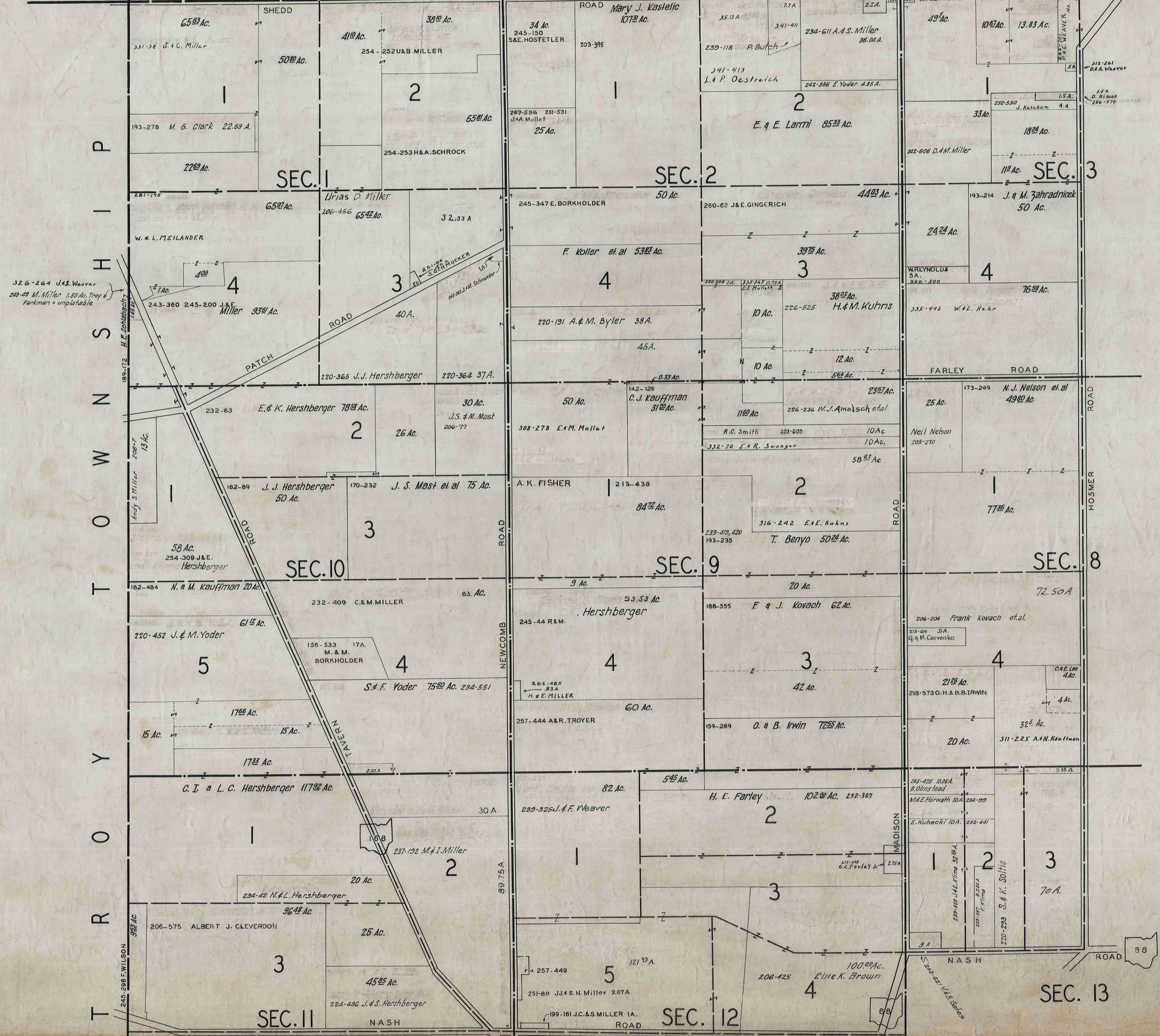
13 N.E.

NORTH-WEST QUARTER

PARKMAN T.P.

NORTH-WEST QUARTER

BURTON TP. M I D D L E F I E D T P.



SCALE 1IN.=10CH.

JAN 1, 1959

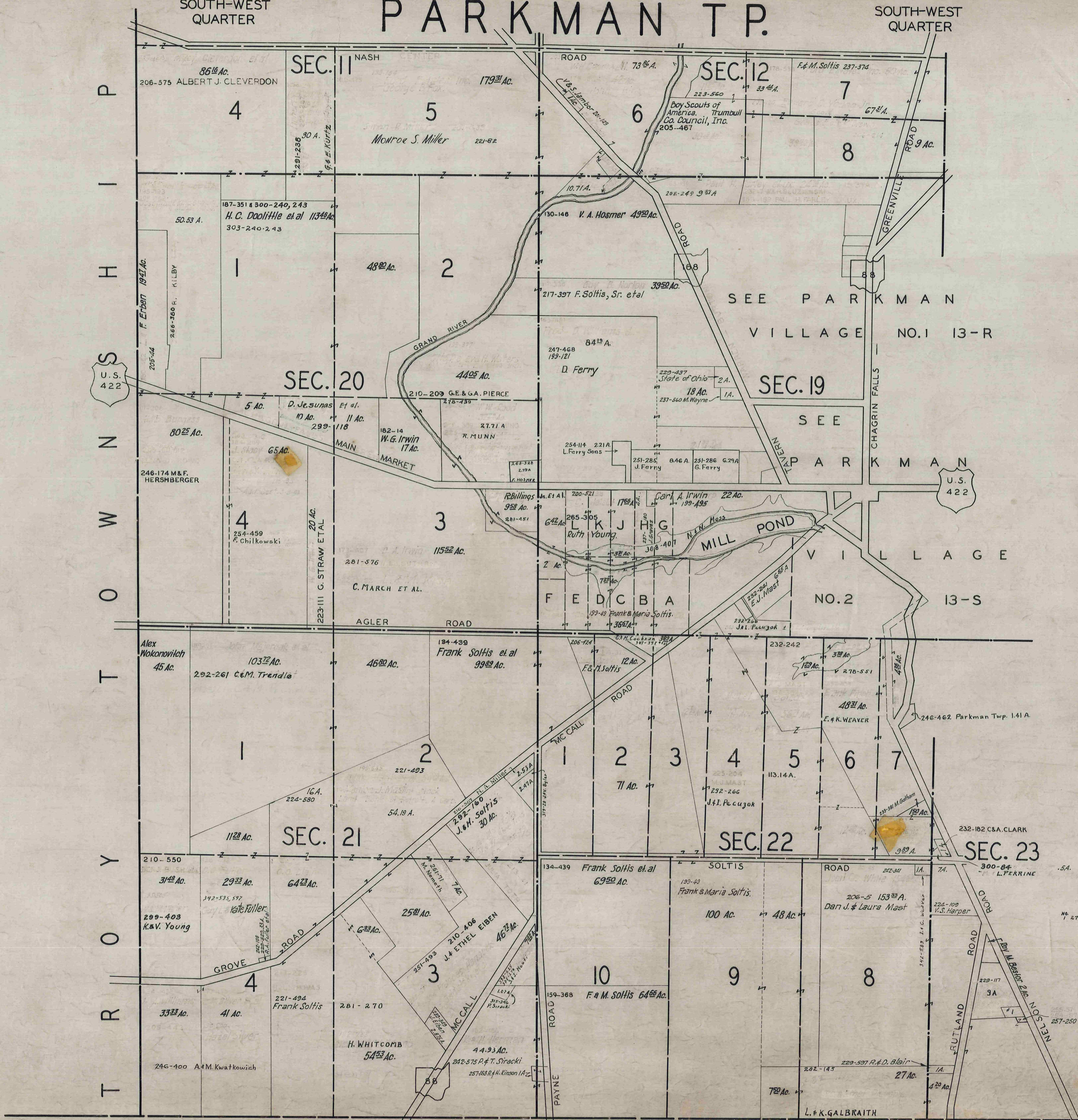
13 N.W.

SOUTH-WEST QUARTER

PARKMAN TWP.

SOUTH-WEST QUARTER

P
I
S
H
N
O
W
T
Y
O
R
T
A
G
E
C
O
U
N
T
Y



SEE PARKMAN VILLAGE NO.1 13-R

SEE PARKMAN VILLAGE NO.2 13-S

SCALE 1 IN. = 10 CH.

JAN. 1, 1959

13-S.W.